



UNIVERSITY OF
PORTSMOUTH



ICP EDUCATION STRATEGY

2024-2029

CONTENTS

FOREWORD	3
INTRODUCTION	4
OUR MISSION	4
OUR VISION	4
OUR VALUES	5
STRATEGIC OVERVIEW	6
ICP STRATEGIC FRAMEWORK	7
EDUCATION STRATEGY THREE PILLARS	8
GUIDING PRINCIPLES	9
STRATEGY IN PRACTICE	11



FOREWORD

I am delighted to launch the ICP Education Strategy incorporating elements from both the Education Strategy for Navitas University Partnerships Europe (UPE) as well as the Education Strategy from the University of Portsmouth. We have developed this strategy to cement our commitment to taking a holistic approach to education supporting not just academic quality and achievement of skill development but including support of the Student Experience. The ICP Education Strategy will guide our vision as we continue to enhance the experience and outcomes for our students.

Felicity Inns, PFHEA
Director of Learning and Teaching



One of the best ways we can support our students to achieve their potential is by ensuring they have the best experience possible. I am excited to contribute to the Education Strategy which focuses on developing the student experience by creating a supportive and inclusive community. I look forward to seeing our Education Strategy in action and continuing to work with our students and staff to achieve the highest of student outcomes.

Chris Rowe
Head of College Services

I am delighted to support the launch of the ICP Education Strategy. Closely aligned with the University of Portsmouth; this strategy eloquently outlines our vision to support each and every student in their journey to the University whilst engaging them in a life-changing experience. At ICP, students will always remain at the heart of everything we do and I hope this strategy inspires our staff and students to engage proactively in a transformational experience.

Heidi Podd
College Director and Principal



INTRODUCTION

At ICP we are committed to enhancing the student learning experience and have developed a framework of learning to support integration, intercultural competency on a programme and institutional level. Through an inclusive, engaged and supportive community students are encouraged to be more than just passive learners but active participants in their learning journey leading to a successful higher education experience and the development of global citizens.

OUR MISSION

INSPIRE our students through

a **C**OMMUNITY of students, staff and partners working together

to successfully **P**ROGRESS to the University of Portsmouth

OUR VISION

We will be a student's first choice pathway provider to the University of Portsmouth.



OUR VALUES

Our values underpin everything we do:



We demonstrate **DRIVE** by achieving and advancing together



We are **ADVENTUROUS** in mind and spirit



We have **CONVICTION** to our purpose and potential



We are **GENUINE** in the way we behave and deliver



We demonstrate **RIGOUR** in enhancing our professional reputation and credibility



We show **RESPECT** by celebrating, valuing and caring for people and the environment



STRATEGIC OVERVIEW

The ICP Education strategy is designed to provide students with a life changing experience and support their successful progression. The strategy is closely aligned with some of the key principles underpinning the University of Portsmouth Education strategy, namely to:

- Provide intellectual challenge, enhance skills acquisition and embody academic excellence through courses that are practice-informed and that engage students in research and innovation.
- Ensure that every student participates in career-enhancing activities to learn through experience and to strengthen their personal development.
- Develop, deliver and enhance pedagogic practice and innovation through engaged and passionate staff, who are recognised and rewarded for their achievement and creativity.
- Support the delivery of an excellent student experience through continuous investment in high-quality learning resources and flexible, adaptable and innovative spaces.
- Provide a vibrant, supportive, collegial learning community of staff and students.
- Raise educational expectations, reduce attainment gaps, and create high-quality, relevant, lifelong education, opportunities through working in partnership with schools, colleges, alumni and others.

The ICP Education strategy uses qualitative and quantitative data to deliver on three pillars of the strategy **Learning and Teaching**, **Student Experience** and **Quality Assurance**.

Learning and Teaching

Our fundamental pedagogical practices



Student Experience

Our approach to student engagement, inside and outside of the classroom



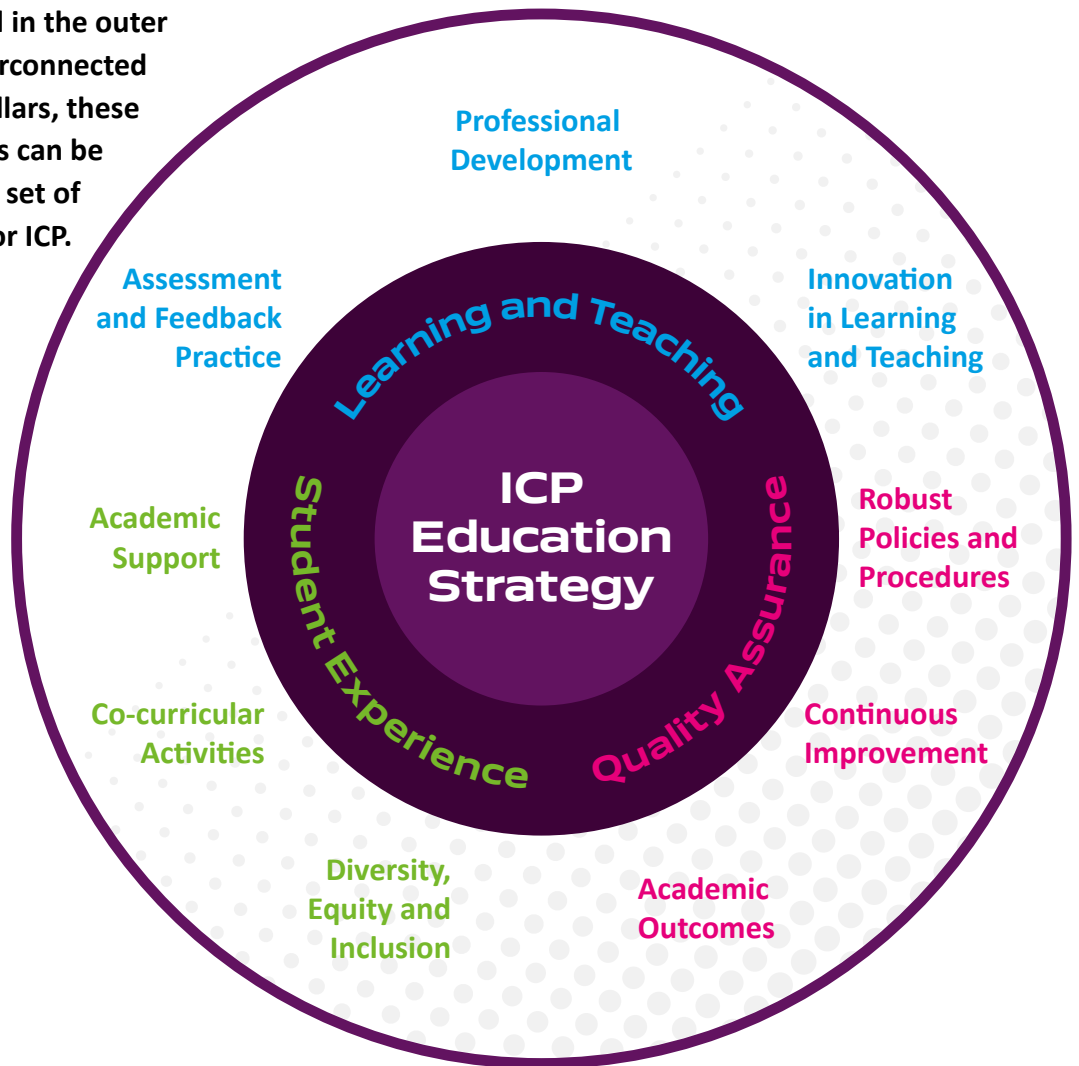
Quality Assurance

Our assurance and enhancement of all educational activities



ICP STRATEGIC FRAMEWORK

Each pillar has three themes of their own, highlighted in the outer cycle. Due to the interconnected nature of the three pillars, these nine guiding principles can be seen as one collective set of enhancement areas for ICP.



LEARNING AND TEACHING



**Assessment and
Feedback Practice**



**Innovation in Learning
and Teaching**



Professional Development

STUDENT EXPERIENCE



Academic Support

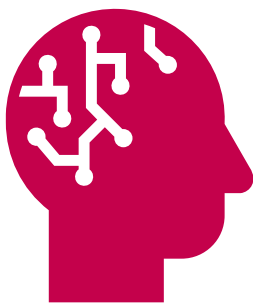


Co-curricular Activities



Diversity, Equity and Inclusion

QUALITY ASSURANCE



Academic Outcomes



Continuous Improvement



**Robust Policies
and Procedures**



ASSESSMENT AND FEEDBACK PRACTICE

Guiding Principles

- Design authentic, student-centred assessments for real-world application
- Provide varied, actionable feedback strategies to support different learning styles
- Ensure assessments align to the assessment matrix thereby ensuring assessments allow for ethical AI use



INNOVATION IN LEARNING AND TEACHING

Guiding Principles

- Implement inclusive curricula and active pedagogies to increase student engagement and academic skill development
- Equip students with the knowledge and skill to enable proficiency in a digital world, including the ethical use of AI



PROFESSIONAL DEVELOPMENT

Guiding Principles

- Support and guide staff in the development, effective and efficient use of digital tools for learning design, teaching practice and authentic assessment at module and course levels.
- Ensure that our staff, whatever their roles, are equipped and supported to advise and assist students in the development of their academic and employability skills.
- Engage staff in relevant continuing professional development to promote review and reflection, and, for example, to develop, disseminate, incorporate and spread best pedagogic practice to support the student experience.



ACADEMIC SUPPORT

Guiding Principles

- Create and facilitate learning spaces which challenge, support and stimulate students to achieve their educational goals
- Ensure a range student services support our diverse student population with their wellbeing and academic development through both common university-wide and bespoke and tailored approaches to meet particular student needs.



CO-CURRICULAR ACTIVITIES

Guiding Principles

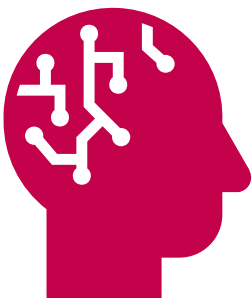
- Ensure student experience is consistently outstanding
- Engage with our students to ensure that their voice is heard and fed into discussions and decisions that impact on their education and the wider student experience.



DIVERSITY, EQUITY AND INCLUSION

Guiding Principles

- Foster a classroom environment that embraces diversity and belonging through advocating for mental health, safety and wellbeing for all
- Empower students to take ownership of their development to increase independence, participation and achievement
- Upskill the intercultural competencies of our academics to provide a safe and inclusive learning community



ACADEMIC OUTCOMES

Guiding Principles

- Reducing disparities in outcomes across all sections of our student population
- Revolutionising Digital Learning



CONTINUOUS IMPROVEMENT

Guiding Principles

- Nurture a culture of enhancement to engage our learning organisation in a continuous improvement cycle
- Offer dedicated professional development opportunities to strengthen staff knowledge, skills and capabilities
- Enrich our data governance, leading to enhanced data quality and metric accuracy



ROBUST POLICIES AND PROCEDURES

Guiding Principles

- Provide a robust, quality assurance framework that accounts for all regulatory requirements
- Promote student participation and external contributions across our governance structure to comprehensively represent the student voice and wider stakeholder groups
- Maintain alignment with University Partner expectations and sector academic standards that benchmark best practice for student success

STRATEGY IN PRACTICE

Every academic year ICP will produce an annual plan that provides more detailed insight of the strategic priorities and focus for the year. The College Action Plan acts as a live and the strategy for delivering those priorities based on prior performance and feedback from students.

Each year the College Learning and Teaching Board will produce a College Action Plan and highlight the areas of focus within the nine guiding principles as outlined in the Education Strategy and this will be shared with both Navitas Registry and the University of Portsmouth within the joint committees.



ICP Ltd

ICP
University Learning Centre
Portsea Island
Portsmouth, Hampshire
PO1 2DH

T +44 (0)2392 848540
E info@icp.port.ac.uk

www.icp.navitas.com